

MOVING FORWARD:

2020-2021
School Year



New Garden
FRIENDS SCHOOL

CHARTING THE PATH FORWARD, TOGETHER.

New Garden Friends School has established a Scenario Planning Task Force which is working diligently to develop a re-entry plan that allows for flexibility, transparency, and prioritizes the health and safety of our community.

New Garden Friends School is currently preparing our physical campuses to support students in the fall of 2020, however, the health and safety of our community will always come first. This fundamental priority demands that we look carefully and critically at the 20-21 academic year and plan for the different scenarios that public health experts are concerned about for the coming year.

Keeping our distinctive approach to teaching and learning at the center of our lens, our goal is to identify and implement necessary adjustments to the ways our community comes together to learn, explore, play, and celebrate. Our campus environments, policies and procedures, and daily operations may be modified to ensure the health and safety of NGFS students, staff, and families.

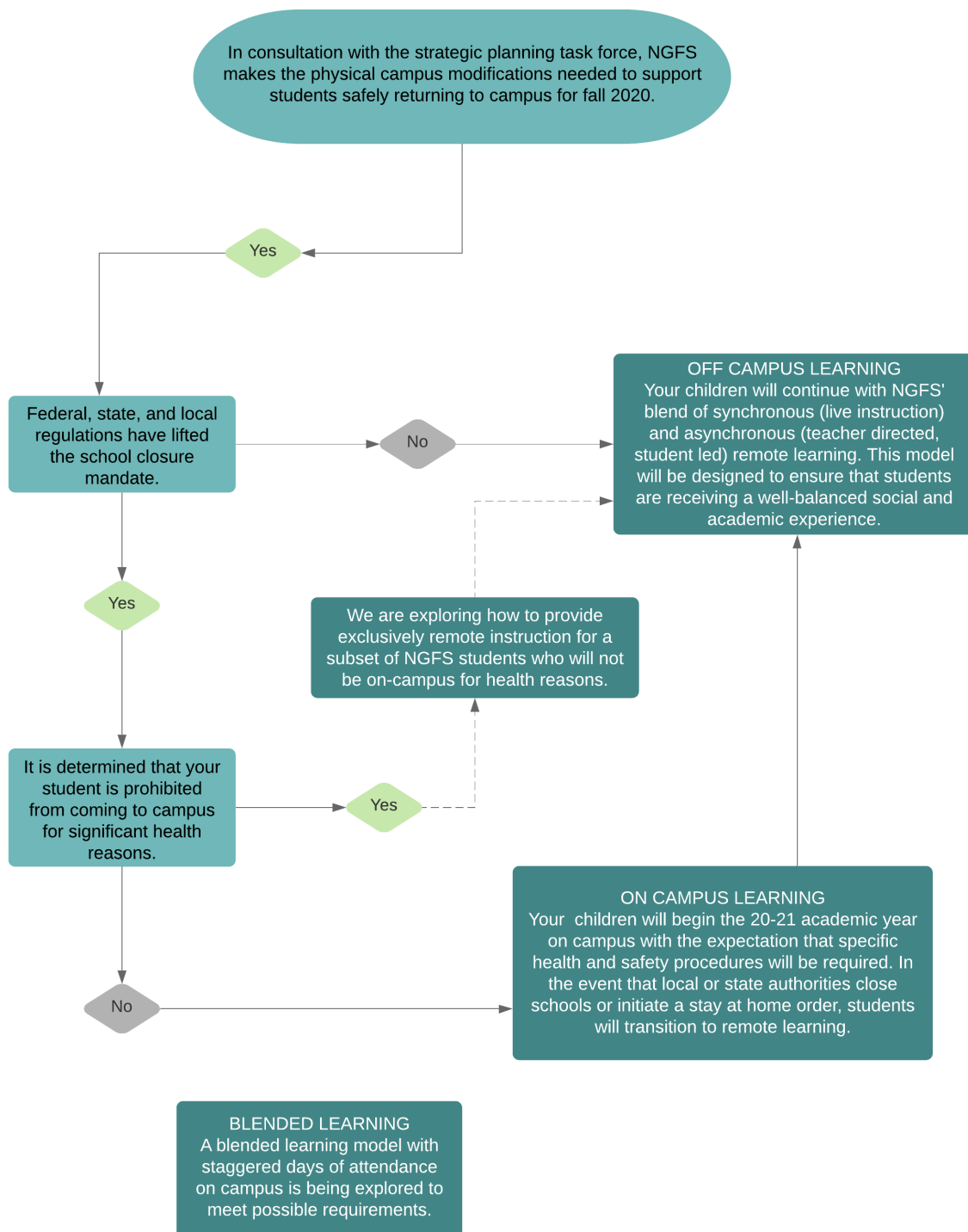
OUR MISSION REMAINS THE SAME

In good times and difficult times, our mission serves as both our compass and our north star. Our community remains courageous, compassionate, resilient, and strong. We remain focused on inclusion, innovation, and our commitment to honoring and developing each person's gifts.



A ROADMAP TO 20-21

As we plan for the 20-21 school year, we are building on the growth mindset that has always characterized our community. It is our sincere hope that we will be back on campus in August and remain there for the balance of the academic year. We are mindful, however, that our mission of honoring and developing each person's gifts demands that we be poised and ready to advance the intellectual, social, and emotional growth of our students, even in times of discontinuity.



ON CAMPUS LEARNING

New Garden Friends School is preparing for in-person school operations to resume in the fall of 2020. The community will follow specific health precautions which will be in accordance with our local, state, and federal requirements. Specific decisions and plans regarding campus modifications will be finalized over the next several months.



Our daily schedule will likely remain the same. Adjustments may be made to the major dates calendar to support a blended learning model of on campus and remote learning.



Our daily programming will likely remain the same, including resource classes at the Lower School and elective offerings at the Middle and Upper School. Outdoor time may be broken up into smaller groups by level. Adjustments may be made for larger school gatherings such as Meeting for Worship.



Extended Care is likely to be offered, however adjustments such as smaller groups and additional designated spaces may be made. After school options including athletics and extracurriculars may be modified and will be determined in response to local and state guidelines.

PREPARING FOR INTERRUPTIONS

Following the recommendations from our re-entry task force committee and trends from past pandemics, NGFS is preparing for waves of interruption to on campus learning. In the event our local community experiences a spike in COVID-19 cases and an interruption of physical operations occurs, a shift to off-campus learning will happen immediately.

SUPPORT FOR STUDENTS

Students with documented or demonstrated need will continue to have access to personalized plans for student support and extension based on strengths and/or challenges; these will be created by the Learning Specialists in collaboration with faculty.

OFF-CAMPUS LEARNING

As an innovative community, we have used this spring to build broad and deep skill sets in both teaching and learning. In just a few short weeks, we shifted our practices and became adept at advancing, assessing, pivoting, adapting, and quickly advancing again. We identified strengths and areas for improvement and we are investing heavily in providing teachers with additional training to design and evaluate remote curriculum, develop relevant instructional material, and measure instructional outcomes. Should it become necessary to resume remote learning for even short periods of time, our faculty and staff will be able to bring even more resources to their robust and responsive work with students.



PRIORITIES OF REMOTE LEARNING

- 1** School-Life Balance
- 2** Continuity of Academic Program
- 3** Community Interaction
- 4** Supporting Student Needs: learning accommodations, social, and emotional.

SUPPORT FOR STUDENTS

At NGFS, our concern for students' social and emotional wellness and growth does not take a back seat to academic endeavors. We are committed to healthy, balanced, and developmentally appropriate levels of support and challenge.

DIGITAL PLATFORMS



RenWeb/FACTS will continue to be our school's main information system. Parents and students can access grades, calendars, announcements, and more.



Google is not new for NGFS students. The Google suite of apps includes Docs, Drive, Gmail and Classroom, and some or all of these apps are used throughout our school.



The NGFS Remote Learning Site will continue to be a central location for easy access to classrooms, assignments, activities, clubs and other resources.



Learning Management Systems (LMS) support and enhance instruction by providing one easy-to-access location for material, assignments, and assessments. Learning can be personalized and students can engage collaboratively and creatively with classmates and teachers. We are currently exploring different systems.



Seesaw is used in our Lower School. Seesaw gives students a place to document their learning, be creative, and learn how to use technology. Students “show what they know” using photos, videos, drawings, text, PDFs, and links. Seesaw also create a digital portfolio of student growth and learning that can be easily shared with families.



Zoom is a video conferencing platform that is used to provide a live (synchronous) class meeting space.

PHYSICAL CAMPUS

While specific decisions and plans will be finalized over the next several months as more information and updated public health guidelines are issued, strategies are being developed in the following areas including but not limited to:



Sanitizing and cleaning processes



Flexibility and multi-purpose spaces to allow for social distancing in classrooms, the gym, etc.



Changes to campus access for visitors and parents



The use of masks



Modification of programs and events in compliance with capacity limits on crowd sizes and social distancing measures



LEADERSHIP

Planning for the upcoming school year requires constant scanning of the landscape and attentiveness to the ever-evolving scope of public health recommendations and guidelines. Our Scenario Planning Task Force is organized and designed so that all aspects of teaching and learning are considered through the lens of health and safety but they are not unduly constrained by these requirements. Decisions, procedures, and plans will be held up against the mission of NGFS and our commitment to honor and develop the gifts of each member of our community.

Flexibility and transparency are key to guiding and preparing our community for the disruption we may experience in the coming year. Please feel free to reach out to Kim Freedman, Head of School or any member of the administrative team at any time if you have questions, we will be hard at work all summer preparing for a great welcome back in August!





New Garden FRIENDS SCHOOL

*New Garden Friends School seeks to be an
inclusive, innovative educational community
guided by Quaker beliefs and committed to
honoring and developing each person's gifts.*